



## OUR KEYWORD

Our business core offering for:

1 PROJECT ENGINEERING

5 CONTROL PANEL DESIGN & MANUFACTURING

2 INSTRUMENTATION & DESIGN

3 HMI & SCADA DESIGN

6 MOTION CONTROL PROGRAMMING & CONFIGURATION

4 INDUSTRIAL NETWORKING

7 SITE COMMISSIONING & SUPPORT



**MS-PRG AUTOMATION PVT. LTD.**

+91 89566 48781 | +91 89566 48782 | +91 89566 48783 | [info@prgautomation.com](mailto:info@prgautomation.com)

Gat no 229, SH 58, taluka-khed, Markal, Pune, Maharashtra, 412105.

[www.prgautomation.com](http://www.prgautomation.com)

**MS-PRG AUTOMATION PVT. LTD.**

**EMBRACE AUTOMATION RESOLUTION**

[www.prgautomation.com](http://www.prgautomation.com)

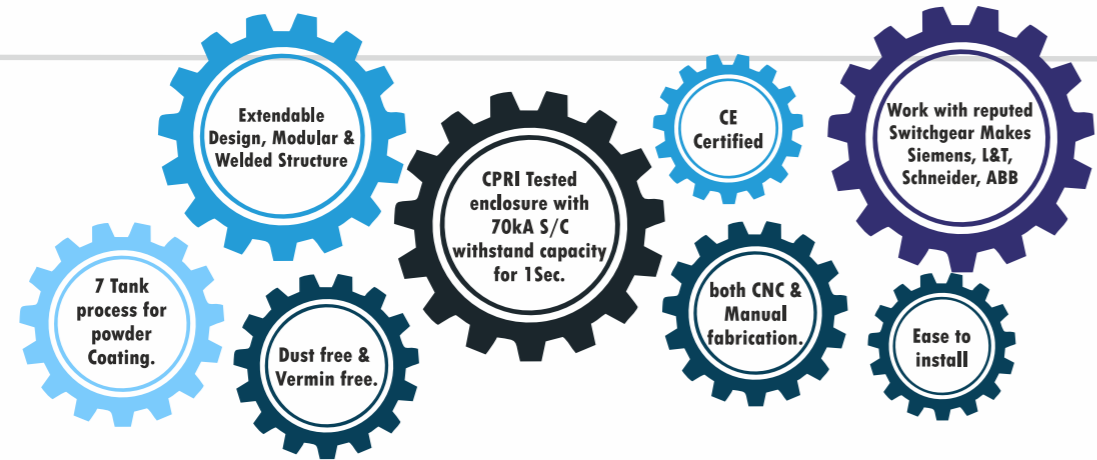






## ABOUT PRG AUTOMATION

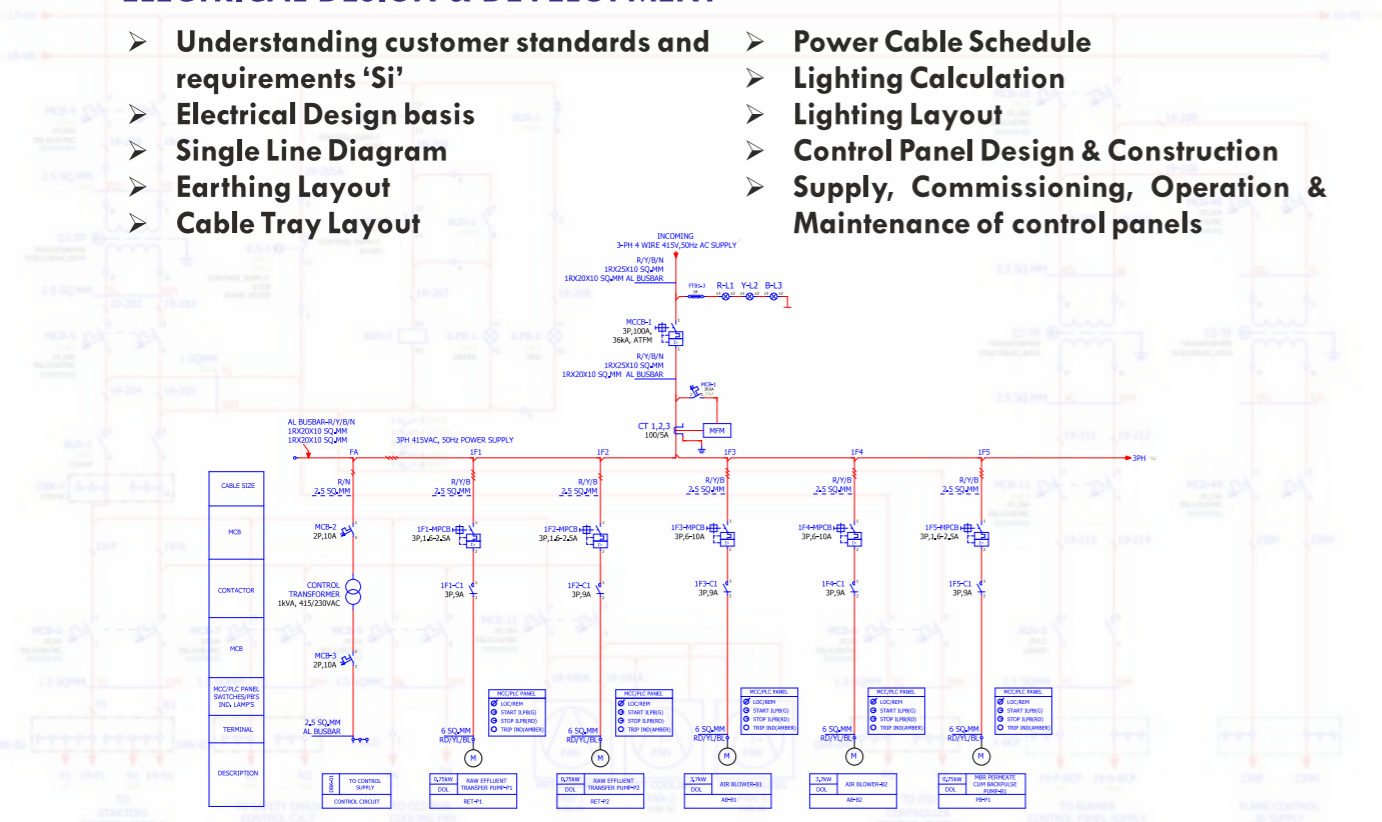
Quality, engineering, integrity, innovative, and the pursuit of continuous development. In the complex environment of factory and process automation, we are the technology leader focused on a customer-centered approach. We develop solutions that meet the unique requirements of each customer's application. For customers who know their exact needs, we listen, understand, and deliver a quality product that meets their exact specifications. For customers looking to start from a beginning concept, we foster a consulting relationship, pulling upon our experience to develop automation interfaces to the most challenging industrial needs. We have served several industries and provided time-tested technological breakthroughs. We take on distinct challenges, accepting each project as an opportunity to enhance our eye for innovation. We put customer relationships at the forefront of everything we do.



## ELECTRICAL ENGINEERING SERVICES

### ELECTRICAL DESIGN & DEVELOPMENT

- Understanding customer standards and requirements 'Si'
- Electrical Design basis
- Single Line Diagram
- Earthing Layout
- Cable Tray Layout
- Power Cable Schedule
- Lighting Calculation
- Lighting Layout
- Control Panel Design & Construction
- Supply, Commissioning, Operation & Maintenance of control panels



## PCC PANELS

- Supply OF PCC panel with a capacity of up to 6300 Amperes & constructed with a focus on robustness and durability.
- Capable of maintaining a fault level of up to 70 kA.
- We provide bus coupler arrangements for efficient power distribution based on specific requirements.



## MCC PANELS

- Equipped for seamless integration with DCS/SCADA/PLC systems.
- Adapts to diverse cable entry points, including top, bottom, or a blend of both, offering choices for front or rear access. Additionally, it provides a hybrid solution, allowing any combination of forms and types.
- CNC construction
- Safe and reliable operation
- Labelled and colour coded wiring
- 3D-CAD (Auto-CAD & E-Plan Design)
- Easy operation
- Controlling heavy starting currents.





## APFC PANEL

- Ensures precise power factor correction in the system
- Can include detuned filters to control harmonics.
- Provides protection against high inrush current during switching.
- Modular to upgrade, up to 500 KVAR
- Capacitors : L&T, ABB, Epcos, Subhodhan, Shreem.
- IVt\* PF controllers : Epcos , L&T, Schneide.
- Thyristorised or Contactor based.
- Designed with the concept of modularity.
- Easiness in operation, very low manual intervention.
- Avoid power factor penalty.



## VFD PANELS

- We offered VFD panels equipped with VFD drives from reputable manufacturers, including Siemens, ABB, Delta, Danfoss, Mitsubishi, Fuji, and Yaskawa, based on customer recommendations.
- Our range includes VFD panels ranging from 0.5HP to 400HP.
- Additionally, we offer independent communication to each VFD drive, connecting to PLC/DCS/SCADA through communication protocols such as TCP/IP, Profinet, Profibus, Modbus.
- Our VFD panels are tailored for various applications, including chiller, AHU, conveyor, blower, pump, and crane systems.



- AHU/ Chiller Control.
- Pump/ Motor/ Blower Speed Control.
- Reactor Control.
- Conveyor/ Crane System.
- Siemens/ AB/Danfoss/ Mitsubishi/ ABB/ Yaskawa/ Delta/ Fuji.
- Remote/ Local/ Bypass Control Option.
- 1-400 HP (0.7457KW-298.28KW) drive panel.



## FLAME PROOF PANEL

- We are recognized as leading manufacturers and suppliers of a comprehensive range of explosion-proof control panels.
- Leveraging our expertise, we specialize in the manufacturing and supply of a quality-approved range of flameproof control panels.



## PLC PANELS

- We supply PLC panels equipped with hardware from reputable manufacturers, including Siemens, Rockwell Automation, Delta, Mitsubishi, Fuji, Selec, GE Fanuc, Schneider Electric, ABB, and RENU, based on customer recommendations.
- In addition, we provide third-party communication solutions for data handshaking and ensure compatibility with Industrial Building Management System (IBMS) communication protocols. These protocols include TCP/IP, Profinet, Profibus, Modbus, CC-Link, Fieldbus, DeviceNet, and ControlNet.



- HMI's with screen size 3.5' to 22".
- Integrated with PLC, HMI , Barriers, VFD etc.
- Desk type | Floor standing / Wall mount.
- PLC's from siemens /AB/ Delta/ Mitsubishi/ABB/Schneider/Delta, etc.
- Customized as per requirement.





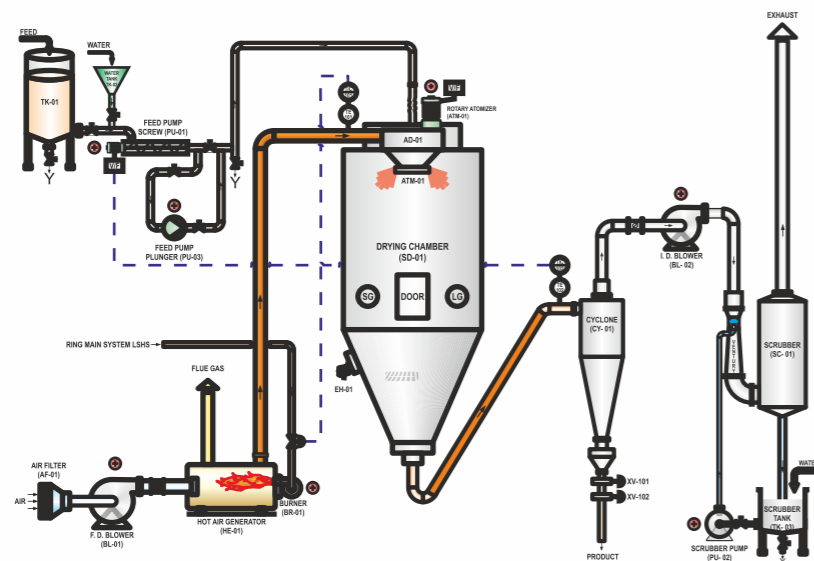
## RIO PANEL

- Supplied up to 4000 IOs of Rio, including Siemens, Rockwell Automation, Delta, Mitsubishi, Fuji, Select, GE Fanuc, Schneider Electric, ABB, and RENU, based on customer recommendations.
- Provided third-party communication solutions for data handshaking with the main PLC system through communication protocols such as TCP/IP, Profinet, Profibus, Modbus, CC-Link, Fieldbus, DeviceNet, and ControlNet.
- Supplied field-mounted Rio panels for both FLP (Flameproof) and non-FLP areas.



## STARTER PANEL & MIMIC PANEL

- The MIMIC panel is employed to visually represent the process flow on a mimic of the plant.
- It is strategically positioned on the panel door for convenient visualization.
- A customized P&ID (Process and Instrumentation Diagram) is designed specifically for the creation of the mimic on the panel. The design is tailored to meet the specific process requirements.
- Relay-based control panels provide interlocking functionality through hardwiring.



## JUNCTION PANELS

- We provide a range of FLP (Flameproof), non-FLP, and stainless steel (SS) junction boxes for field wiring, aiming to minimize field cabling and simplify site erection tasks.
- Our offerings include IP52/IP54 and IP66 junction boxes, ensuring safety in industrial applications.



- SS316 / SS304 / MS POWDER COATED
- Aluminium/Copper Busbar JB gasketed trims
- FLP Junction boxes
- Aluminium/Copper Busbar JB
- Aluminium / copper bus option

## PROCESS INSTRUMENTATION

- Instrument Selection -
- Control Loop Design -
- Data Sheet Preparation -
- Instrument Data Acquisition -
- Analytical Instruments -
- Communication Protocols -
- Remote Monitoring & Control -
- Calibration -
- Compliance and Standards -
- Energy Efficiency -





## AUTOMATION SERVICE

- Design, Engineering, Documentation, Development, FAT, SAT & Commissioning
- Automation Design Basis
- IO List Preparation
- IO Tagging
- System Architecture Design
- BOM Preparation
- Io's Distribution
- PLC/DCS Programming Development
- HMI/SCADA Development
- Cold & Hot Loop Testing
- Risk Analysis



## FACTORY AUTOMATION

Our engineers utilize state-of-the-art tools to provide you with the best solution for your application.

- Programmable Controllers
- Industrial Network Communications
- Industrial Computers Motion Control integrated Systems
- Data Recording & Reporting
- Distributed Controls/Intelligent SCADA
- Wireless Data Acquisition



## NETWORKING & INDUSTRIAL IOT

Seamless real-time communication is the core prerequisite for all Industry 4.0 and Industrial Internet of Things (IIoT-) implementations. PRG offers best-in-class communication components for all leading industrial communication protocols such as EtherCAT, EtherNet/IP, ORIFINET, Modbus, IO-Link and more. All of these silicon solutions come with comprehensive software support.



## CUSTOMIZED SOFTWARE'S & VISION SYSTEM

- Proprietary Developed Machine Vision Software using PC
- Smart/PC Less Camera
- Useful in Pattern Matching
- Color Recognition
- Finding missing parts
- Dimensions checking
- Sorting
- Customized Industrial Software's
- Graphical visualization using latest technology
- Report Generation / Data Logging
- Controlling Monitoring & Analysis
- Fault Identification
- Visual Production Monitoring
- Reporting - by SMS or via Email
- User Configurable





## OUR MISSION

### SUPPORT OUR WORK

We develop solutions that meet the unique requirements of each customer's application. For customers who know their exact needs, we listen, understand, and deliver a quality product that meets their exact specifications. For customers looking to start from a beginning concept, we foster a consulting relationship, pulling upon our experience to develop automation interfaces to the most challenging industrial needs. We have served several industries and provided time tested technological breakthroughs. We take on distinct challenges, accepting each project as an opportunity to enhance our eye for innovation. We put customer relationships at the forefront of everything we do.



To listen to our customers and continually strive to provide perfect service, distribute quality products and offer technologically advanced solutions. To treat our employees with dignity and respect and to provide a safe and pleasant work environment. To never lose sight that it is our employees who make our company what it is today. To act in partnership with our suppliers as we promote their lines in our marketplace and educate our employees on the application of their products. To make a fair profit to assure the company's continued growth and financial stability.



## OUR MENTORS



## OUR PARTNERS

